

DOLL ARTISTRY

Three dolls with elaborate hairstyles and veils. The doll on the left has voluminous, curly blonde hair and a large, sheer white veil. She wears a gold necklace and a brown, textured dress. The doll in the center has long, wavy blonde hair with a black star-shaped hairpiece and a sheer white veil. She wears a gold necklace and a brown, textured dress. The doll on the right has long, wavy blonde hair and a large, sheer white veil. She wears a black crescent moon necklace and a brown, textured dress.

the Toy Shoppe
fine collectibles since 1975

We love fine dolls...

We love the magic, the character and the meticulous detailing that you find only in a doll that has been lovingly crafted by hand. These are the dolls that amaze you, that delight you and that touch your heart forever.

For the past 35 years, we have searched across the world to bring remarkable editions to our collectors. The artist dolls in this catalog are rare and distinct. The complete selection of fine dolls at The Toy Shoppe gallery amazes doll lovers from around the world. The next time you are near Virginia, stop by our shoppe in Richmond and see these amazing works in person.

We pride ourselves in making every dream reachable. Collectors love our interest-free payment plans which we can customize to suit your individual needs. Just call toll free 1 800 447-7995 or visit our website at www.TheToyShoppe.com.

Danny & Barrie



Snowbear Santa
by Mark Dennis
T48863 14" ProSculpt
Santa rides a polar bear
made of cloth over wire
with an Arctic hare pelt.
One-Of-A-Kind \$1600

Helen Kish



We've been impressed with Helen's dolls for almost three decades. Her work is graceful, subtle and crisp with an appeal to collectors of all ages. In 2010, Helen was honored with the Lifetime Achievement Award from Jones Publishing for her many contributions to the doll world!

Our work with Helen Kish in the 1980s was very instrumental in establishing the current market for exquisite artist dolls. As an homage to that special time in our history, we asked Helen to create an exclusive anniversary edition that harkens back to the spirit of her porcelain dolls like *Penelope* and *Little Mother And Baby Brother*. *Willow* is the first porcelain doll that Helen has created in many years. She has that classic doll "feel" with her rich, long hair, beautiful outfit and traditional mary janes. We immediately fell in love with our petite and precious *Willow*.

Willow
T48867 9.5" with hand-painted eyes. She wears a floral cotton dress with a white cotton bodice. Over this is a dusty-pink, wool felt embroidered jacket. Five-way jointed. LTD 50 \$498 AMC \$49.80/mo



call toll free 1 800 447-7995

www.TheToyShoppe.com

Annette Himstedt



Annette burst onto the doll scene in 1987 with her now famous *Barefoot Children* collection that defied conventional dollmaking and set the standard for the modern doll. She continued her amazing streak of innovation and artistry for two decades. No other contemporary doll artist has matched her influence. We know her creations are destined to become the treasured antique dolls of future generations... much in the same way the *Bru* and *Jumeau* dolls of the late 1800s have become.

When Annette closed her manufactory in 2009, it was the end of an era. She contacted her longtime friends at The Toy Shoppe to ensure the proper resolution for her private collection - including her prized *Artist's Proofs* - for which she no longer had the space to keep.

This is the most important collection that The Toy Shoppe has ever offered in our 35 years. The scope of the collection, the impact that these dolls had upon the world, and the fact that Annette was so personally involved in the creation of each one make these *Artist's Proofs* both distinctive and significant.

- Danny & Barrie, owners

If you are interested in Annette's dolls and Artist's Proofs, please call for availability and pricing.

call toll free 1 800 447-7995

www.TheToyShoppe.com

Annette Himstedt



from left to right

Tinka 2 of 4

T47955 24"

Artist's Proof from 1997.

Mirte & Klein 1 of 3

T47984 35 1/2"

Artist's Proof from 1999.

An Mei 2 of 4

T47940 24"

Artist's Proof from 1997.

Irmi 4 of 4

T47953 22"

Artist's Proof from 1997.

Call to order your catalog of
Annette Himstedt Artist's Proofs

T48595 \$19.95





6
 On our cover *Annette* began her dollmaking career working in porcelain. *Star, Sun and Moon* are three all-porcelain dolls inspired by the heavens. This ethereal set combines *Annette's* artistry at sculpting beautiful children with her stunning fashion design and magnificent palette.

Sonne (Sun) 6 of 13 T48486 28"
Stern (Star) 6 of 13 T48487 23 5/8"
Mond (Moon) 6 of 13 T48485 26"

Sun, Star & Moon are porcelain dolls from the 2001 Collection. Call for more information.

call toll free 1 800 447-7995



Krissi I 2 of 2
 T48047 30 3/4"
 Artist's Proof from 2001.

Fiene 2 of 2
 T47878 27 1/2"
 Artist's Proof from 1990-91.

right page

Kumari 1 of 1
 T48176 35 1/2"
 Artist's Proof from 2005.

Milli 1 of 1
 T48151 33 1/2"
 Artist's Proof from 2004.

Julika 1 of 1
 T48144 33"
 Artist's Proof from 2004.

Salinda 1 of 1
 T48191 33 1/2"
 Artist's Proof from 2005.

www.TheToyShoppe.com



Mark Dennis



Considered by many to be one of the premier doll artists in the world today, Mark fuses his diverse background in theater production, design and bronze sculpting to create doll art with breathtaking balance that seems to defy gravity. His sense of drama is accented by the detailed vintage clothing

and elaborate staging of his work. The posing is delicately sculpted and often captures an entire story in that one perfect moment. Mark paints each edition by hand with his subtle and rich palette. His one-of-a-kind, striking creations are made of ProSculpt polymer clay and are highly sought after by collectors. Mark's dynamic editions have been featured on many magazine covers! *We can work with Mark to create a unique edition just for you... call us toll free for more information 1 800 447-7995.*



Nick and the Gingerbread Man
T47160 12" *Santa wears a floral print robe lined with silk, over velvet trousers and a silk button-up shirt. One-Of-A-Kind \$1600*

Captured!
T45933 24" *The Flying Monkey from Oz begins to take Dorothy away while the Scarecrow makes a valiant, but futile, attempt to stop him. One-Of-A-Kind \$5500*

call toll free 1 800 447-7995



Hanging With The Caterpillar
T48843 12" *Alice with famous caterpillar. One-Of-A-Kind \$1600*



Looking Glass
T48857 10" *Alice steps through the handcrafted looking glass. One-Of-A-Kind \$1600*



Stories with Grandpa
T43419 12" *Grandpa, 9" Grandson, seated on a 4" round wooden base. One-Of-A-Kind \$2500*

www.TheToyShoppe.com

Hildegard Günzel



Internationally acclaimed for her doll artistry, German artist Hildegard Günzel complements sculpting perfection with unique apparel and grace. She designs each of her exquisite outfits and assembles them from the finest fabrics, laces and trims. More masterpiece than doll, these wax-over-porcelain dolls radiate a rare beauty that could only come from gifted genius. Hildegard is truly one of the leading artists in the modern age of dollmaking.

These magnificent editions have mouth-blown glass eyes and each wig is handmade from real hair. The features are painted by hand and show the deft touch of a master.

The Toy Shoppe has recommended Hildegard Günzel's fine dolls to our collectors for over two decades for their striking beauty and superior artistry.



Danseuse

T47356 46.5" Made from a composition of white and silver porcelain. Includes 29.5" Ballettina bear. LTD 20 \$8250

Lydia

T42486 30" Includes a 9" bisque doll standing atop a music box that plays Happy Birthday. LTD 15 \$4695

Alice and Flamingo Chair Set

T48623 29.5" Alice with pink flamingo chair, Teddy bear and White Rabbit. LTD 20 \$9350



Danseuse



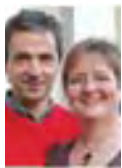
Lydia



Alice and Flamingo Chair Set

Feline

Lynne & Michael Roche



The dolls by this English husband and wife team possess a quiet beauty which is approachable, yet eloquent. With the depth of their glass eyes and a handcrafted mohair wig, each darling face is lovingly painted by Lynne. These elegant, well-designed dolls feature lime-those bodies with porcelain heads and hands. Michael's unique ball-and-socket jointing enables very natural posing. Lynne dresses her dolls with rich fabrics and colors that enhance the charm of these small, limited editions. *With their work so rooted and inspired by classic dolls like Bru, The Toy Shoppe knows that Roche dolls will be treasured additions to your collection.*

Winter Rose With Teddy - T47013
10.5" with mohair Teddy. LTD 20 \$2325

Summer Arthur With Teddy - T47014
11" with mohair Teddy. LTD 20 \$2325

Mira in Vintage Liberty - T45619
18" includes mohair teddy. LTD 25 \$2420

Primrose At The Toy Shop
T39149
7" All-bisque doll plays in her lovely, illustrated Toy Shop display box. LTD 25 \$925

call toll free 1 800 447-7995

www.TheToyShoppe.com



Winter Rose
With Teddy

Summer Arthur
With Teddy

Mira in
Vintage Liberty



Dorothy with Car
T28166 11" comes complete with a wonderful handmade wooden car. LTD 25 \$2445



Theo with Train Play
T43700 16" beautifully crafted all-wood train. LTD 20 \$2900



Alice Down The Rabbit Hole
T45614 7" Alice with her handcrafted wooden rabbit hole. 12.5"t x 7"w x 2.5"d LTD 20 \$1730



Alice And The Little Door
T45615 7" Alice with wooden room. 11"t x 12"w x 6"d LTD 20 \$1730

Kat Soto

Dolls have held a special fascination for Kat as far back as she can remember. More than simple playthings to her, she was mesmerized by their construction and potential for animation. Kat was blessed to be born in a creative family and was encouraged by her parents, both of whom are successful, talented artists. She began her dollmaking career in 1984 and has since received many awards. Compelling faces, rich outfits and wonderful balance work together to make Kat's editions very special and highly sought by collectors. She chooses to work in resin to preserve all of the fine details of her original wax sculptures. Over the years, Kat has worked hard to develop the unique painting techniques and casting materials she uses. *We love the detailing in Kat's creations... her clothing is meticulously finished. The painting and sculpting build upon each other with fascinating results.*



Alice
T48512 14" seated.
Finished in over
18 layers of artist's
oil paint, gouache
and a very special matte
varnish. In her lap, she
holds a velvety top hat
for a special friend.
LTD 15 \$1400



Each Santa's face is rich with both sculpting and painted detailing. The hands are simply amazing. Kat's costuming is inspired by traditional winter wear from years gone by. Their many accessories have been meticulously handcrafted. These masterpieces are sure to be treasured heirlooms of your family.

Plum Santa - T48807

Persimmon Santa - T48647

Burgundy Santa - T48808

Each is 14", One-Of-A-Kind
\$800 each AMC \$66.67/mo



Elisabeth Pongratz

Delicately carved and painted by hand in a simplistic fashion – very similar to the dolls by Sasha Morgenthaler and Käthe Kruse – these creations speak to your heart with a wonderful, warm emotional quality. Pongratz dolls are maple wood dolls that are fully jointed with a unique spring mechanism designed by Elisabeth and her husband, Wolf. Each outfit is made with the finest natural fibers (fine wools, angora, cottons and silks) and handcrafted to match each personality. Even their shoes are custom fit for the left or right foot!
Because of their handcrafted nature, a very small number of these precious dolls are created each year. Call The Toy Shoppe for availability.



– all-wood dolls on opposite page

- Redhead Girl in Cream Dress H283 T45295 14" \$2595
- Girl In Yellow H297N T48796 14" \$2550
- Girl With Blue Felt Dress DJ003 T46886 10" \$2265
- Blonde In Blue H292 T48795 14" \$2595
- Girl In Cream Knit Dress DJ353 T48794 10" \$2265
- Girl in Blue Knit H291 T45296 14" \$2595

– seated in front

- Girl in Raspberry H303 T48797 14" \$2685



February 2009 Cloth Body S353
T48799 18" \$505 AMC \$37.09/mo

February 2009 Cloth Body L353
T48798 10" \$445 AMC \$37.09/mo



Call for our complete selection of all-wood dolls by Elisabeth Pongratz

Nancy Wiley



I create dolls that are sculptural. I consider my unpainted sculptures to be three dimensional canvases. I paint the face and sometimes the clothes to create a portrait painting-like quality. They are doll-like but not in the traditional play sense.

Nancy has always thought of the doll as an art form and creates them using a classic portrait painting approach. She often blurs the line between art and doll by using techniques such as burlap for hair, adding a fine lace collar onto a painted bodice or dressing a doll in a painted fabric skirt. Nancy Wiley's creations are truly unique and possess a charm that leaves every collector touched.



Nancy created a rich collection of Alice characters to photo-illustrate her new book, Alice's Adventures in Wonderland. Featuring 82 pages of brilliantly-designed scenes, this hardcover book is absolutely spectacular.



Ballerina

T48809 10" with her stage (10"w x 14"t). Handcrafted from wood and painted by hand. LTD 25 \$495

Alice's Adventures in Wonderland Book
T47791 82 page, signed hardcover book. \$35



The Mad Hatter

T47794 10"
LTD 200
\$275 AMC \$55/mo

Queen Of Hearts

T47793 11"
LTD 200
\$300 AMC \$50/mo

Cheshire Cat

T47796 2.5" LTD 200
\$175 AMC \$43.75/mo

White Rabbit

T47795 6" LTD 200
\$200 AMC \$50/mo

Alice

T47792
10" LTD 200
\$350 AMC \$58.34/mo

The Duchess

T48806 11"
LTD 200
\$350 AMC \$43.75/mo